

Surface Mount Frequency Mixer

RMS-30+ RMS-30

Level 7 (LO Power +7 dBm) 200 to 3000 MHz



Maximum Ratings

Operating Temperature	-40°C to 85°C
Storage Temperature	-55°C to 100°C
RF Power	200mW
IF Current	40mA
Permanent damage may occur if any of these limits are exceeded.	

Pin Connections

LO	1
RF	4
IF	5
GROUND	2,3,6

Features

- wideband, 200-3000 MHz
- conversion loss, 7.0 dB typ.
- small size, 0.25"x0.31"x0.2"

Applications

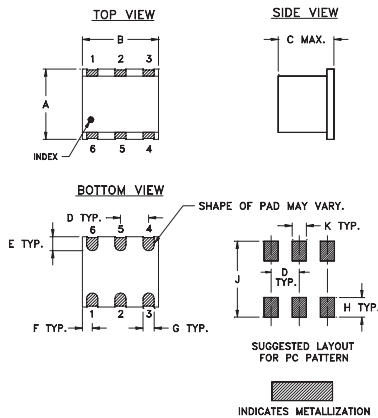
- MMDS
- ISM/PCS/UMTS
- GPS

CASE STYLE: TT240
PRICE: \$6.95 ea. QTY (1-9)

+ RoHS compliant in accordance with EU Directive (2002/95/EC)

The +Suffix identifies RoHS Compliance. See our web site for RoHS Compliance methodologies and qualifications.

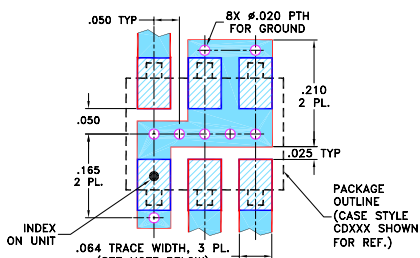
Outline Drawing



Outline Dimensions (inch/mm)

A	B	C	D	E	F
.250	.31	.20	.100	.050	.055
6.35	7.87	5.08	2.54	1.27	1.40
G	H	J	K	wt	
.040	.070	.270	.050	grams	
1.02	1.78	6.86	1.27	0.50	

Demo Board MCL P/N: TB-03 Suggested PCB Layout (PL-052)



- NOTES:
1. TRACE WIDTH IS SHOWN FOR ROGERS RO4350B WITH DIELECTRIC THICKNESS .030" ± .002"; COPPER: 1/2 OZ. EACH SIDE. FOR OTHER MATERIALS TRACE WIDTH MAY NEED TO BE MODIFIED.
 2. BOTTOM SIDE OF THE PCB IS CONTINUOUS GROUND PLANE.
-

Electrical Specifications

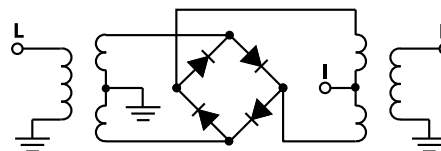
FREQUENCY (MHz)	CONVERSION LOSS (dB)		LO-RF ISOLATION (dB)		LO-IF ISOLATION (dB)		IP3 at center band (dBm)			
	LO/RF	IF	Typ.	Min.	Typ.	Min.				
200-3000	DC-1000	6.5	.20	9.0	9.8	27	17	20	7	11

1 dB COMP: +1 dBm typ.
For phase detection, DC output positive with in-phase RF & LO.

Typical Performance Data

Frequency (MHz)		Conversion Loss (dB)	Isolation L-R (dB)	Isolation L-I (dB)	VSWR RF Port (:1)	VSWR LO Port (:1)
RF	LO	LO +7 dBm	LO +7 dBm	LO +7 dBm	LO +7 dBm	LO +7 dBm
200.10	230.10	5.30	35.34	22.95	1.59	6.06
400.10	430.10	4.94	45.55	22.74	1.63	3.34
600.09	630.09	4.68	38.09	24.23	1.75	2.59
828.65	858.65	6.27	32.57	30.75	1.81	2.05
1000.07	1030.07	6.43	30.53	30.13	2.20	1.49
1114.35	1144.35	6.16	30.64	23.50	2.56	1.38
1228.63	1258.63	5.88	29.50	21.69	3.00	1.34
1342.92	1372.92	6.03	30.63	23.23	3.60	1.47
1457.20	1487.20	6.87	30.80	25.21	4.40	1.62
1500.00	1530.00	6.95	31.01	25.49	4.81	1.75
1685.76	1655.76	7.08	30.14	20.62	5.49	2.12
1857.18	1827.18	7.22	28.52	16.49	3.82	2.51
1971.47	1941.47	7.26	27.20	14.81	3.19	2.75
2085.75	2055.75	7.12	26.56	13.64	2.97	2.86
2200.03	2170.03	6.95	26.14	12.33	2.76	2.94
2371.45	2341.45	6.77	24.57	11.40	2.44	2.95
2542.87	2512.87	6.62	25.24	13.33	1.85	2.94
2714.30	2684.30	5.98	26.06	14.42	1.35	2.45
2885.72	2855.72	6.24	26.86	14.79	1.60	1.83
3000.00	2970.00	6.95	28.42	16.91	2.52	1.60

Electrical Schematic



Mini-Circuits®
ISO 9001 ISO 14001 AS 9100 CERTIFIED

minicircuits.com

P.O. Box 350166, Brooklyn, New York 11235-0003 (718) 934-4500 Fax (718) 332-4661 For detailed performance specs & shopping online see Mini-Circuits web site

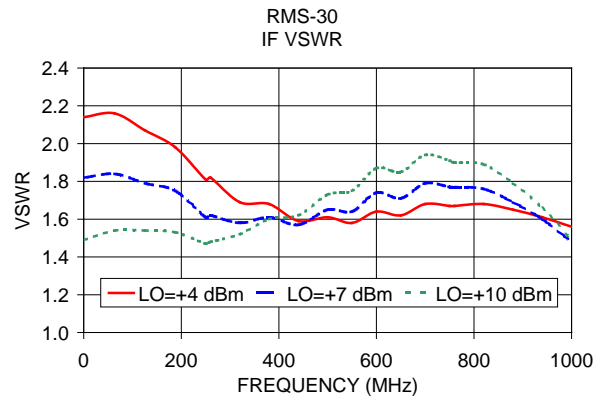
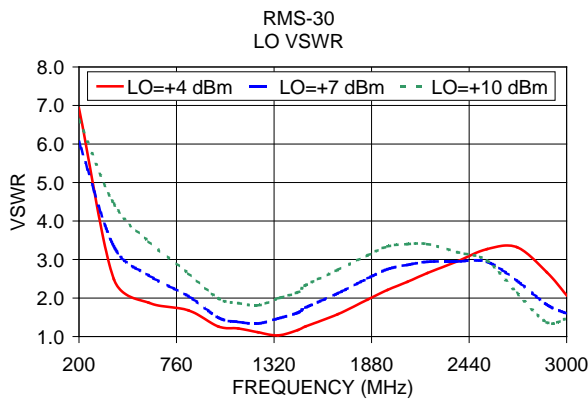
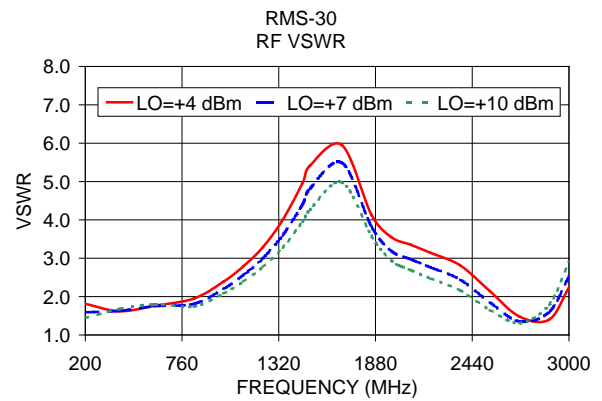
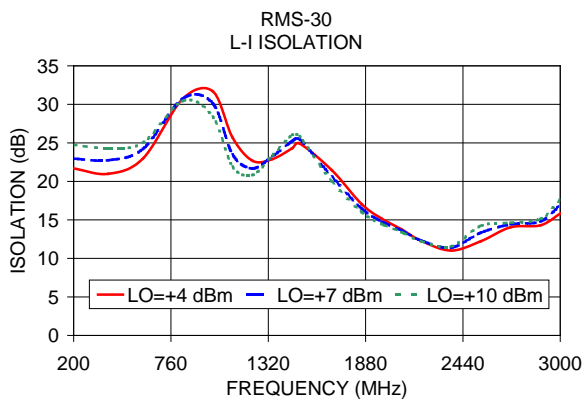
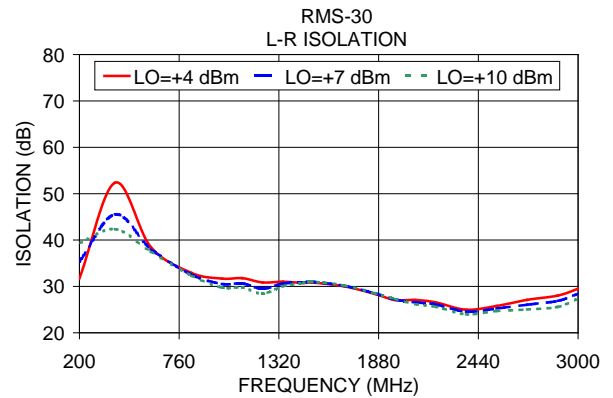
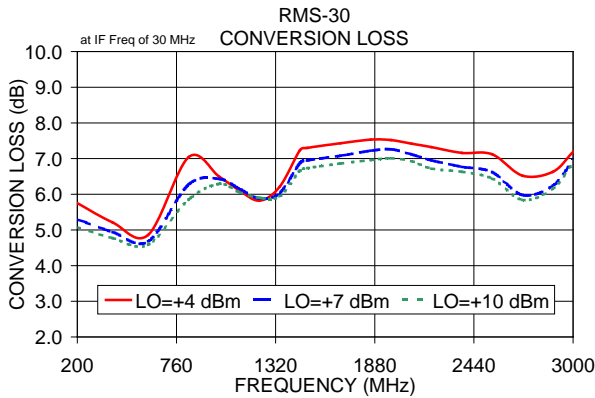
The Design Engineers Search Engine Provides ACTUAL Data Instantly From MINI-CIRCUITS At: www.minicircuits.com

IF/RF MICROWAVE COMPONENTS

REV. B
M102713
RMS-30
071002
Page 1 of 2

Performance Charts

RMS-30+ RMS-30



P.O. Box 350166, Brooklyn, New York 11235-0003 (718) 934-4500 Fax (718) 332-4661 For detailed performance specs & shopping online see Mini-Circuits web site

The Design Engineers Search Engine Provides ACTUAL Data Instantly From MINI-CIRCUITS At: www.minicircuits.com

IF/RF MICROWAVE COMPONENTS