

Plug-In

Frequency Mixer

TUF-1H+

Level 17 (LO Power +17 dBm) 2 to 600 MHz



CASE STYLE: B02
PRICE: \$12.45 ea. QTY (1-9)

+ RoHS compliant in accordance with EU Directive (2002/95/EC)

The +Suffix has been added in order to identify RoHS Compliance. See our web site for RoHS Compliance methodologies and qualifications.

Maximum Ratings

Operating Temperature	-55°C to 100°C
Storage Temperature	-55°C to 100°C
RF Power	200mW
IF Current	40mA
Permanent damage may occur if any of these limits are exceeded.	

Pin Connections

LO	4
RF	1
IF	2
GROUND	3
CASE GROUND	3

Features

- wideband, 2 to 600 MHz
- low conversion loss, 5.90 dB typ.
- high L-R isolation, 50 dB typ.
- rugged welded construction

Applications

- VHF/UHF
- transmitters/receivers
- defense & federal communications

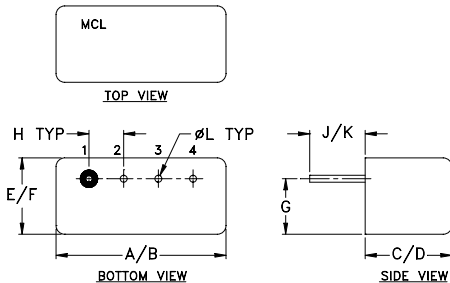
Electrical Specifications

FREQUENCY (MHz)		CONVERSION LOSS (dB)				LO-RF ISOLATION (dB)						LO-IF ISOLATION (dB)						IP3 at center band (dBm)
LO/RF f_L-f_U	IF	Mid-Band m		Total Range Max.	L		M		U		L		M		U			
		\bar{X}	σ		Typ.	Min.	Typ.	Min.	Typ.	Min.	Typ.	Min.	Typ.	Min.	Typ.	Min.		
2-600	DC-600	5.90	0.18	7.0	8.0	68	50	50	30	43	25	62	45	48	30	33	22	26

1 dB COMP.: +14 dBm typ.

L = low range [f_L to $10 f_L$] M = mid range [$10 f_L$ to $f_U/2$] U = upper range [$f_U/2$ to f_U]
m = mid band [$2f_L$ to $f_U/2$]

Outline Drawing



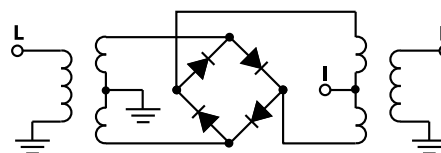
Outline Dimensions (inch/mm)

A	B	C	D	E	F
.480	.500	.240	.255	.210	.230
12.19	12.70	6.10	6.48	5.33	5.84
G	H	J	K	L	wt
.16	.100	.14	.20	.020	grams
4.06	2.54	3.56	5.08	0.51	1.9

Typical Performance Data

Frequency (MHz)		Conversion Loss (dB)	Isolation L-R (dB)	Isolation L-I (dB)	VSWR RF Port (:1)	VSWR LO Port (:1)
RF	LO	LO +17dBm	LO +17dBm	LO +17dBm	LO +17dBm	LO +17dBm
2.00	32.00	6.30	62.98	52.28	1.22	1.67
5.00	35.00	5.95	62.06	52.79	1.10	1.60
10.00	40.00	5.92	60.47	52.35	1.03	1.63
20.00	50.00	5.91	57.14	51.13	1.02	1.61
34.13	64.13	5.81	53.27	49.30	1.04	1.58
50.00	80.00	5.72	50.24	47.27	1.06	1.57
66.26	96.26	5.66	48.03	45.61	1.07	1.55
82.33	102.33	5.71	46.33	44.27	1.08	1.54
100.00	120.00	5.63	44.99	43.26	1.09	1.57
130.52	160.52	5.61	43.18	41.91	1.10	1.55
162.65	192.65	5.61	41.46	40.45	1.10	1.55
200.00	240.00	5.60	40.12	39.22	1.08	1.60
259.04	299.04	5.42	38.10	37.51	1.07	1.67
307.24	347.24	5.62	37.54	36.13	1.06	1.70
355.43	395.43	5.86	37.41	36.94	1.05	1.76
387.56	357.56	5.92	36.35	35.99	1.04	1.82
435.76	405.76	5.81	35.35	33.91	1.05	1.84
467.89	437.89	5.90	36.34	33.81	1.06	1.85
483.95	453.95	6.08	36.44	33.54	1.08	1.87
500.00	470.00	6.27	36.27	33.21	1.09	1.90
600.00	570.00	6.18	36.36	33.38	1.09	1.89

Electrical Schematic



Mini-Circuits®
ISO 9001 ISO 14001 AS 9100 CERTIFIED

minicircuits.com

P.O. Box 350166, Brooklyn, New York 11235-0003 (718) 934-4500 Fax (718) 332-4661 For detailed performance specs & shopping online see Mini-Circuits web site

The Design Engineers Search Engine Provides ACTUAL Data Instantly From MINI-CIRCUITS At: www.minicircuits.com

IF/RF MICROWAVE COMPONENTS

REV. A
M98898
TUF-1H+
DJ/TD/CP
070411
Page 1 of 2

